

KIDSVILLE



LEARN

Did you know that Valentines have hearts and arrows on them because of Greek Mythology?

Valentine's Day is a day for sending a special message to someone you love, usually with candy, flowers or cards.

In Greek Mythology, the son of Aphrodite carried a quiver of arrows, and his mother gave him the power to shoot an arrow into someone's heart and cause them to fall in love.

The arrow was a message of love to someone, like a Valentine.



EXPLORE

Go on a Greek myth treasure hunt for Valentine arrows at the store, at school, at the library and even your house. You will be surprised how many hearts and arrows you will find during the Valentine's holiday. You will find arrows on Valentine cards, candy, signs, and even clothing.



CREATE

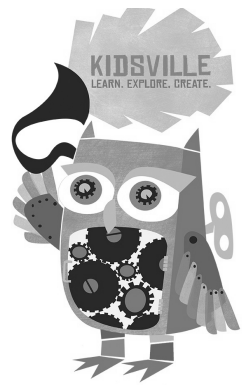
Make your own arrow card to send a message of love to someone.

YOU WILL NEED:

- 1 piece of paper for the card
- 1 piece of a drinking straw
- 1 heart shape
- 1 small triangle tip
- 1 paper feather end
- glue for attaching
- markers for decorating and writing
- an envelope if you want one

A downloadable pdf is available to show this craft and parts can be cut out to use.





4 inches of paper straw



Arrow feathers and tip



Fabric heart with two cuts in the center—put straw through heart before glueing to card — then glue arrow feathers and tip

card

